

# Guidance on using Masks

## WHEN TO USE A MASK

For healthy people wear a mask **only if you are taking care of a person with suspected 2019-nCoV infection**

Wear a mask, **if you are coughing or sneezing**

Masks are effective only when used in **combination with frequent hand-cleaning** with alcohol-based hand rub or soap and water

If you wear a mask then you **must know how to use it and dispose of it properly**



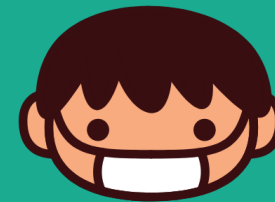
## HOW TO PUT ON, USE, TAKE OFF AND DISPOSE OF A MASK

**Before putting on a mask, clean hands with alcohol-based hand rub or soap and water**



## HOW TO PUT ON, USE, TAKE OFF AND DISPOSE OF A MASK

**Cover mouth and nose with mask and make sure there are no gaps between your face and the mask**



# Guidance on using Masks

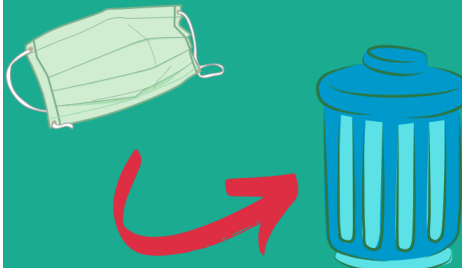
HOW TO PUT ON, USE, TAKE OFF AND DISPOSE OF A MASK

**Avoid touching the mask while using it; if you do, clean your hands with alcohol-based hand rub or soap and water**



HOW TO PUT ON, USE, TAKE OFF AND DISPOSE OF A MASK

**Replace the mask with a new one as soon as it is damp and do not re-use single-use masks**



HOW TO PUT ON, USE, TAKE OFF AND DISPOSE OF A MASK

**To remove the mask: remove it from behind (do not touch the front of mask); discard immediately in a closed bin; clean hands with alcohol-based hand rub or soap and water**

